

TECHNICAL RIDER

KAURI HONKAKOSKI COMPANY: THE BASEMENT

The show is adapted to each venue. If something is impossible, we are happy to discuss alternatives. Please make sure to send the Stage Plan and Equipment List to the technical producer no later than 1 month before the show, to ensure enough time for possible changes.

Don't hesitate to contact us with questions or comments!

CONTACT DETAILS

*Technical Producer & Lighting Designer: Sisu Nojonen, +358 505696225, sisusalama@iki.fi
Performer, Kauri Honkakoski: + 358 505180525, kauri.honkakoski@gmail.com*

FULL RECORDING

<https://vimeo.com/1051171361> (Password: on request)

TEAM ON TOUR, 3 pers

- Kauri Honkakoski, performer
- Sisu Nojonen, technical production, lights
- Tuuli Kyttälä, sound

AUDIENCE

- Target audience: grown-ups
- Mainly without spoken language, apart from 3 radio announcements in English
- Audience configuration: End-on

SCHEDULE

- Show
 - Length 50 min
- Production Schedule
 - Stage Plan and Equipment List: 1 month before the show
 - Production meeting on Teams / phone: 2 weeks before the show
 - Light rigging: 1 day before the show
 - Set-up and rehearsal: 8 hours on the day of the show, if lights are pre-rigged
- Tear down after the show: 1 hour

The venue provides proper technical Stage Plans and photos, and an Equipment List no later than 1 month before the show.

STAGE

- About 8m (wide) x 5m (deep)
- Black box with a complete black out
- Black backdrop, black side walls or curtains, black floor or black dance mats

SOUND

- The Venue provides:
 - A Sound Technician for the set-up and shows. Must be familiar with the venue and its equipment, and able to configure the system (signal routing, mixer, PA tuning and timing, delays etc.)
 - A high quality Sound System with:
 - 2 main PA speakers (left-right, or if the stage is wide, left-center-right)
 - 1 subwoofer
 - 2 extra speakers on the stage, in the middle or at the back of the stage (these are used as stage monitors for the performer and as extra "effect" monitors)
 - 2 surround speakers in the auditorium, if possible
 - Enough cabling for the sound system to be installed freely
 - Mixer with at least 6 inputs and 6 analog outputs
 - Sound interface with at least 6 outputs. Must be compatible with Macbook Pro M1-computer (USB C port)
- The Company provides a laptop computer with Ableton Live 11, and runs the sound during the show.

LIGHTS

- The show can be done with conventional fixtures. Some of these can be replaced with moving heads / leds if available.
- The Venue provides:
 - Minimum 1 Light Technician for the set-up and shows. The technician must be familiar with the venue and its equipment
 - Minimum 8 hours for the set-up and programming (the exact time depends on the equipment etc.)
 - Ideally the light pre-rigged before our arrival. (See Generic Light Plot attached.)

- Fixtures:
 - 20 x Fresnel 500-1000W (back wash L711, high cross L711, front o/w & L201, special L022)
 - 4 x ETC Source4 profile zoom 25-50deg with blades and gobo holder + 2 x breakup / leaf gobo
 - 2 x PAR64 cp61 medium flood (o/w and L017)
 - 2 x PAR56 cp 62 wide flood (o/w and L711)
 - 11 x PAR56 cp61 medium flood
 - 1 x pinspot (PAR36)
- Control:
 - Lighting console GrandMA2 or GMA2onPC
 - minimum 40 dimmer channels
- Color Gels:
 - L711 Cold Blue
 - L022 Dark Amber
 - L201 Full CT Blue
 - L017 Surprise Peach
- The Company runs the lights during the show.

SET & RIGGING

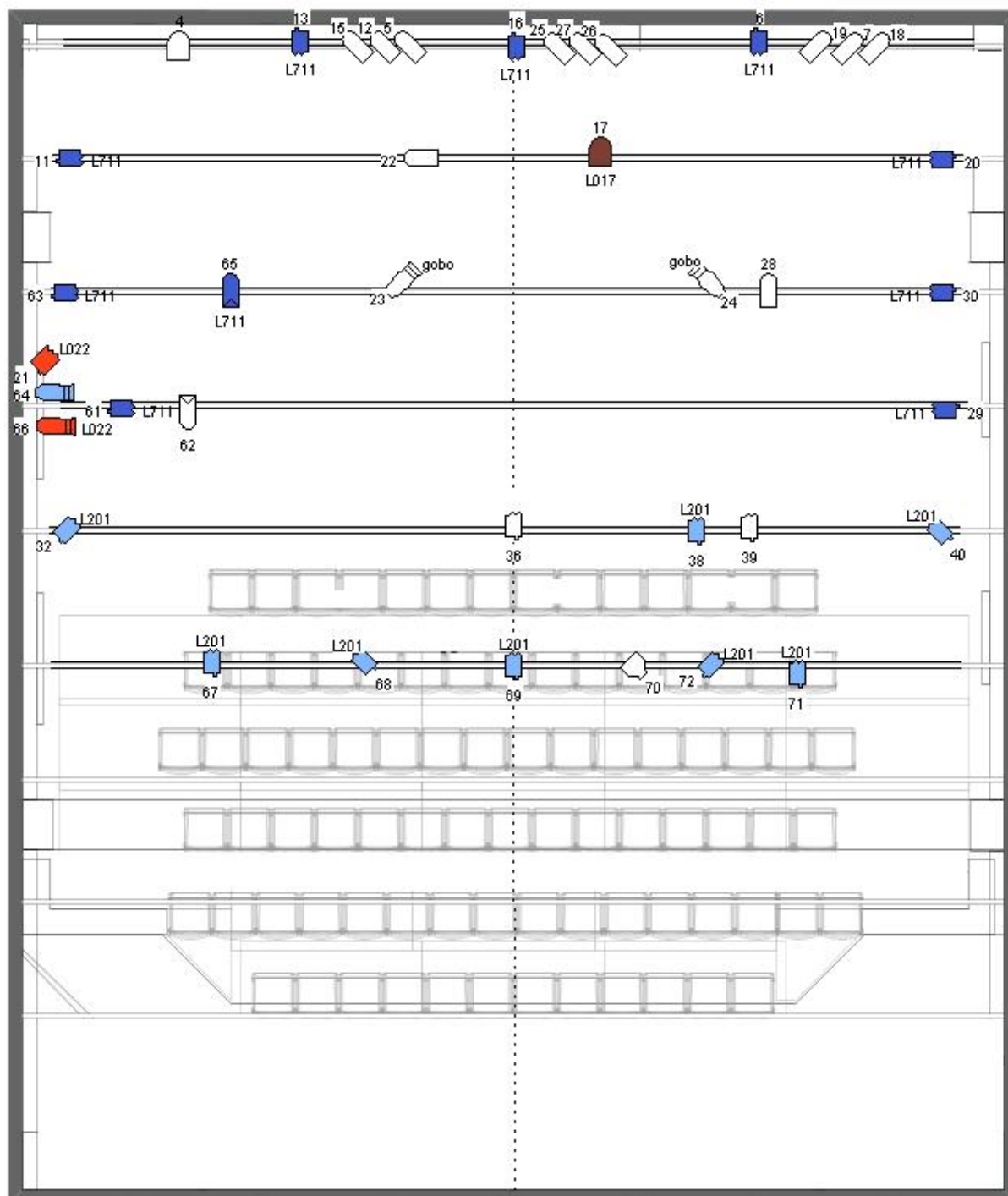
- The Venue provides:
 - A ladder or a man lift
- The Company provides:
 - Metal bed
 - Wooden ladder
 - Two mounds of sand (the sand is glued to a base; no loose sand)
 - Cabinet with a wash basin
 - Window frame hung from the grid (plexiglass, no glass)

BACKSTAGE AND CATERING

- The Venue provides:
 - A warm, tidy dressing room
 - Mirror for make-up and sufficient light
 - Shower & a clean towel
 - Drinking water
 - We appreciate coffee, tea and light snacks
 - Special diets: vegan / vegetarian

GENERIC LIGHTING PLOT

- This reference grid is at about 3.5m height.


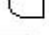



KAURI HONKAKOSKI COMPANY: KELLARI

Generic light plot 10.1.2025 - LD: Sisu Nojonen, sisusalama@iki.fi / +358505696225

KEY:

- 20 x  Fresnel 500W
- 4 x  Profile ETC S4 25-50deg
- 1 x  pinspot

- 2 x  PAR56 cp62 wide flood
- 2 x  PAR56 cp61 medium flood
- 2 x  PAR64 cp61 medium flood
- 3 x  3-BATTEN: PAR56 cp61 medium flood