

TECHNICAL RIDER

KAURI HONKAKOSKI COMPANY: HINTERLAND



The show is adapted to each venue. If something is impossible, we are happy to discuss alternatives. Please make sure to send the Stage Plan, Cross Section and Equipment List to the technical producer no later than 1 month before the show, to ensure enough time for possible changes.

Don't hesitate to contact us with questions or comments!

CONTACT DETAILS

*Technical Producer & Lighting Designer: Sisu Nojonen, +358 505696225, sisusalama@iki.fi
Director, Kauri Honkakoski: + 358 505180525, kauri.honkakoski@gmail.com*

FULL RECORDING

<https://vimeo.com/870264023> (Password on request)

TEAM ON TOUR, 9 pers

- Sisu Nojonen, technical producer
- Kauri Honkakoski, director
- 7 performers: Oona Jama, Sonja Järvisalo, Ines Kakkonen, Liv Meijer Nordgren, Ruben Nagore Santandreu, Freia Stenbäck, Valter Sui

AUDIENCE

- Target audience: grown-ups
- No spoken language
- Audience configuration: End-on

SCHEDULE

- Show
 - Length 50 min
 - Production Schedule
 - Stage Plan and Equipment List: 1 month before the show
 - Production meeting on Teams / phone: 2 weeks before the show
 - Set-up time: 2 days
 - 1 day before the show:
 - 7-9 dance mats and back & wing curtains in place
 - 9-10 get-in, setting the scenery, marking placements with tape
 - 10-13 light rigging and focus, sound rigging
 - 13-14 lunch
 - 14-18 light programming, sound check
 - 18-21 rehearsal
 - Show day:
 - 9-12 light programming
 - 12-13 lunch
 - 13-16 rehearsal
 - 16-17 mopping the stage
 - 19 Show
 - Tear down after the show: 1 hour
-

The venue provides proper technical Stage Plans, Cross Section and an Equipment List no later than 1 month before the show.

STAGE

- 9 m (wide) x 9 m (deep) + 1 m on each side after the wings and 1m behind the backdrop
 - See "Passages in the Wings & Focus Plan for the Light Corridors"
- Black box with a complete black out
- Black backdrop, black side walls or curtains, black floor or black dance mats
- The Performers wear shoes on the dance mats
- The Performers wear heavy white oil-based makeup that might smear the dance mats
 - The Venue cleans the mats after the shows (e.g. soya based degreasing cleaner, like Aqua Soja by Zep cleans smears without damaging mats, when used right after the show and mopped with plenty of water after)

SOUND

- The Venue provides:
 - A Sound Technician for the set-up and shows. Must be familiar with the venue and its equipment, and able to configure the system (signal routing, PA tuning and timing etc.)
 - A high quality Sound System with:
 - 2 main PA speakers (left-right, or if the stage is wide, left-center-right)
 - 1 subwoofer
 - 2 extra speakers at the back of the stage, or stage monitors for the performers
 - Enough cabling for the sound system to be installed freely
 - Mixer with at least 2 inputs and 2 analog outputs
 - Sound interface with at least 6 outputs (stereo material which goes to all speakers: main PA, sub, back speakers)
- The Company provides a laptop computer with Ableton Live 11, and runs the sound during the show

LIGHTS

- The Venue provides:
 - Minimum 1 Light Technician for the set-up and shows. Must be familiar with the venue and its equipment
 - 2 days for the set-up, focus and programming (the exact time depends on the space, the equipment etc.)
- Moving heads
 - Back wash: 6 x wash fixture [or back wash 6 x 1kW Fresnel cold (Lee165 DAYLIGHT BLUE) & 6 x 1kW Fresnel warm (Lee777 RUST)]
 - Front lights: 6 x wash fixture [or front wash 6 x 1kW Fresnel cold (Lee201) & 6 x 1kW Fresnel warm (Lee013)]
 - Spots / specials: 6 - 8 x moving head spot [or wash]
 - Floor units: 3 - 4 x Beam [or any moving head with zoom to 10° or narrower. If not available, then 8 x PAR36 pinspot on floor stands]
- Side lights
 - Side light stands 5pc per side with 2 x profile spot [ETC S4 750W 36°] each, at head & ankle height, Lee200 gel
 - individual channels if possible (if paired, pair adjacent head heights together and ankle heights together)
- Specials

- 4 light corridors made with 13 x profile spot [ETC S4 36°], Lee725 gel & open white
- Front light specials 2 x Fresnel 1kW Lee201 gel
- Back / down light specials 3 x Fresnel 1kW, Lee165 gel
- Control & Haze
 - Lighting console GrandMA2 or PC wing
 - Hazer
- Small dim lights in the wings and behind the backdrop for the actors to find their way
- Fluorescent tape for marking routes
- 2 pieces of Lee 280 Black Wrap (matt black aluminium foil), 15cm x 15cm each. New set for each show.
- The Company runs the lights during the show

SET

- The Company provides:
 - two metal trolleys
 - a tree with detachable branches

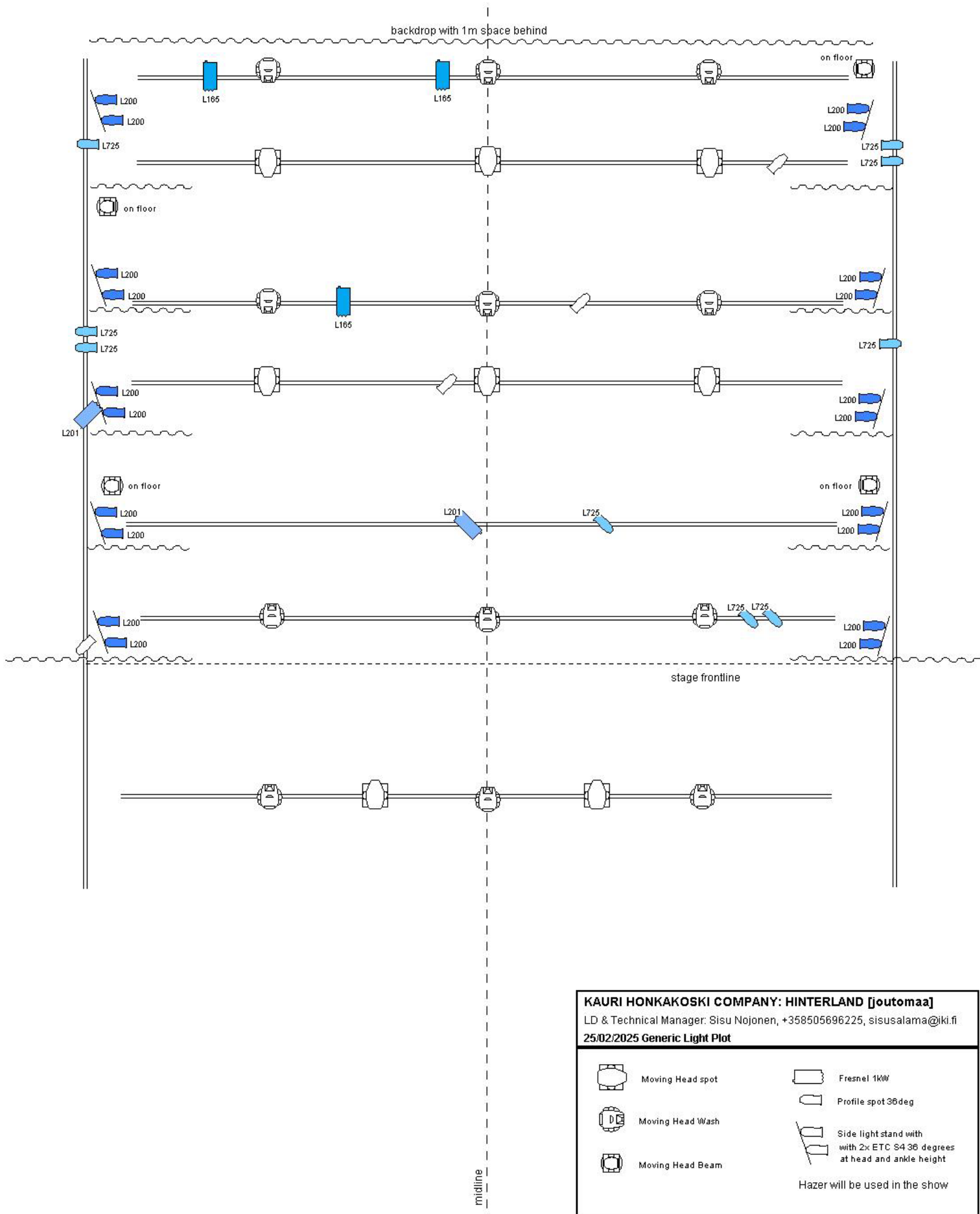
FRONT OF HOUSE

- The Venue provides:
 - Program print-outs for the audience, with the Director's note
 - The Company provides the material for the Program
-

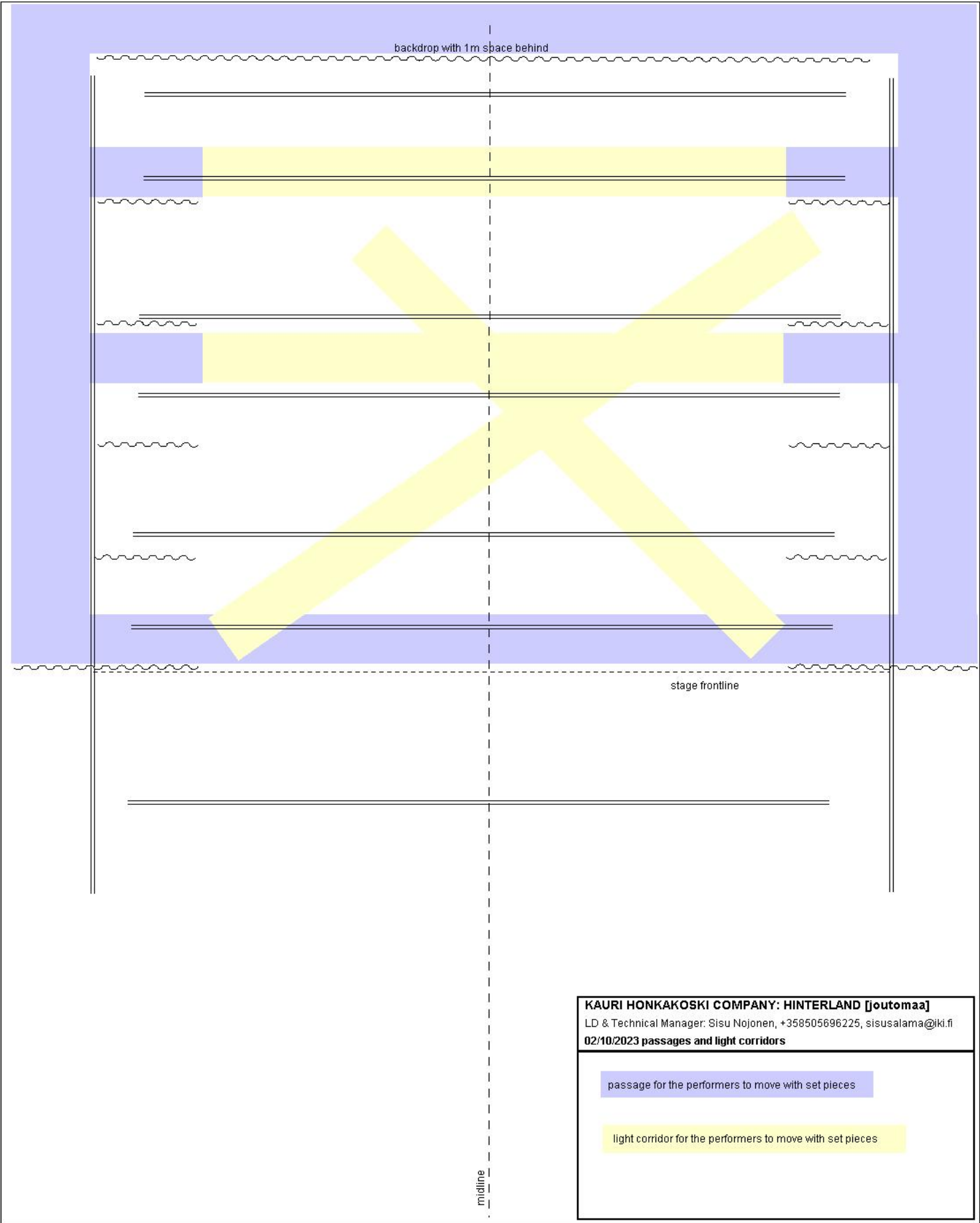
BACKSTAGE AND CATERING

- The Venue provides:
 - Two warm, tidy dressing rooms
 - Mirrors for make-up, sufficient light
 - Showers & clean towels
 - Drinking water
 - We appreciate coffee, tea and light snacks
 - Special diets: vegetarian & vegan

GENERAL LIGHTING PLOT



PASSAGES IN THE WINGS & FOCUS PLAN FOR THE LIGHT CORRIDORS



KAURI HONKAKOSKI COMPANY: HINTERLAND [Joutomaa]
LD & Technical Manager: Sisu Nojonen, +358505696225, sisusalama@iki.fi
02/10/2023 passages and light corridors